



COMPACT CEILING CASSETTE SLZ-KA Series

Dimensions (W x D x H): 570 x 570 x 208mm
(Grille: 650 x 650 x 20mm)

The Perfect Size
Attractive and Inconspicuous
Choice of Infra Red or Wired

The SLZ-KA Series is perfect for both residential and small business applications as it offers Inverter Technology and quiet operation. The compact size of this range is ideal for installation in offices with ceiling tiles, while the lightweight design helps to make installation easier and more convenient.



SLZ-KA-VAL
Infra Red
Remote Controller



SLZ-KA-VA
PAR-21MAA
7 Day Timer
Wired Controller

DC Inverter	PAM Control	Long Life Filter	Fresh Air Intake	AUTO VANE	Compact Size	12-hour Timer	ACO
Auto Restart	Cooling at 46°C/-15°C	Cooling at -15°C	Heating at -15°C	SLZ-KA VA	Weekly Timer	Centralised On/Off	M-NET connection
Self Diagnosis	12m	30m	MXZ connection	Flare connection	White Panel	Optional	Optional

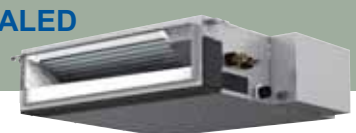


COMPACT CEILING CONCEALED SEZ-KD Series

Dimensions (W x D x H): KD35/50: 990 x 700 x 200mm
KD60/71: 1,190 x 700 x 200mm

Slim Design for Lowered Ceilings
Economical Operation
7 Day Wall Timer

The SEZ-KD Series is hidden from view with only air grilles visible, with a new height of 200mm the slim design guarantees ease of installation, providing optimum air conditioning efficiency and comfort. A versatile solution, ideal for use in homes, offices or hotels. Now available with optional Drain Lift Pump.



PAR-21MAA
7 Day Timer
Wired Controller

DC Inverter	PAM Control	Air-Cleaning	Compact	ACO	Auto Restart	Cooling at 46°C/-15°C	Cooling at -15°C
Heating at -15°C	Weekly Timer	Centralised On/Off	M-NET connection	Self Diagnosis	12m	30m	Optional
MXZ connection	Flare connection	Optional Drain Lift Pump	Optional	Optional	Optional	Optional	Optional

Now only 200mm high!

For further information on these features please see our web site: www.bdt.co.nz

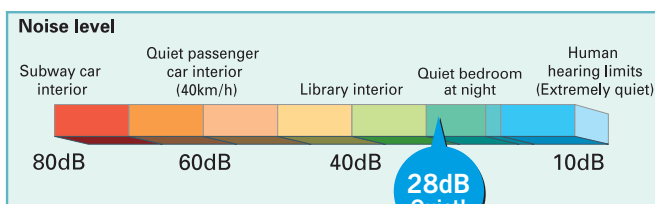
Air-Cleaning Filter

This built-in filter removes dust and contaminants, keeping air fresh. Maintenance is as simple as vacuuming the filter. The SLZ Series also has a long life filter with a life of up to 2,500 hours without replacement.

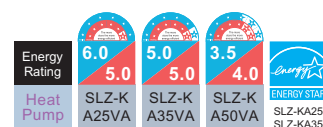
Very Quiet Operation

Mitsubishi Electric has a long standing reputation for offering some of the quietest models in the industry. The new S-Series range is no exception, at a quiet noise level of 28 dB(A) in Low Fan Speed and capable of maximum output for the SLZ-KA25.

Only **28dB**
SLZ-KA25



Energy Ratings



Energy Rating	Not available as Ducted Units are exempt from Energy Star Ratings.			
Heat Pump	SEZ-K D35VA	SEZ-K D50VA	SEZ-K D60VA	SEZ-K D71VA

DC Inverter

Guaranteed Heating at -15°C

Cleaning-free, pipe reuse

RTTOA

ENERGY STAR
SLZ-KA25/35

Outdoor Units

SUZ-KA25/35VA



Dimensions (W x D x H): 800 x 285 x 550mm

SUZ-KA50/60/71VA



Dimensions (W x D x H): 840 x 330 x 850mm



sshhhh...

They're very, very quiet.

Quietly Superior

Controllers:

PAR-21MAA 7 Day Timer

Wake up or come home to optimal temperatures whilst conserving energy!

The controller allows your system to be programmed to maintain optimal temperature levels during the times when you are likely to be in the room. In the periods where you are unlikely to be there (such as during work hours or sleep time), the temperature can be set back to a minimum holding temperature instead of turning the system completely off.

Turning a system on and off typically uses the most energy because the system has to heat a room starting from a very low temperature. By maintaining a minimum holding temperature Mitsubishi Electric inverter technology saves you energy as the temperature only needs to be raised by a couple of degrees.

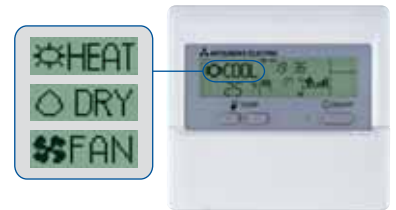
Most air conditioning systems come with a 24 hour remote controller. This means that you can only set the system up to automatically turn on and then off within a 24 hour period. This needs to be manually reactivated each time. The new Mitsubishi Electric 7 day timer allows you to program up to 8 separate Start/Stop patterns per day over a 7 day period.

For example:

- Between 6am and 9am set temperature to 21°C
- Between 9am and 5.30pm set temperature to 18°C
- Between 5.30pm and 10pm set temperature to 21°C

Operation Control Function

The PAR-21MAA 7 Day timer also allows the temperature range to be limited to conserve energy by preventing excessive cooling and heating. The controller panel can also be locked off to prevent random modification.



The new clear and precise display is easy to understand for any user.

Optional: G-50 Controller (With Web Server Functions)

Mitsubishi Electric can also offer you a control system to control your Air Conditioning from your local PC. The G-50 gives you simple Computer control from your local Internet Explorer.



Optional: MAC-821SC-E (Centralised ON/OFF Controller)

An optional Centralised ON/OFF Controller (MAC-821SC-E*) can also be incorporated to regulate all connected units in your home (and enabling ON/OFF selection and operation status confirmation from one single controller).



Note:

The PAR-21MAA and MAC-821SC-E both require the MAC-397IF-E adaptor per indoor unit.



Specifications:

SLZ-KA VA(L) Inverter Ceiling Cassette & SEZ-KD VA Inverter Ceiling Concealed Heat Pump Models (R410A)

TYPE	Compact Ceiling Cassette				Compact Ceiling Concealed				
	Inverter Heat Pump				Inverter Heat Pump				
	MODEL NAME	SLZ-KA25VA(L)	SLZ-KA35VA(L)	SLZ-KA50VA(L)	SEZ-KD35VA	SEZ-KD50VA	SEZ-KD60VA	SEZ-KD71VA	
INDOOR UNIT	SLZ-KA25VA	SLZ-KA35VA	SLZ-KA50VA	SEZ-KD35VA	SEZ-KD50VA	SEZ-KD60VA	SEZ-KD71VA		
OUTDOOR UNIT	SUZ-KA25VA	SUZ-KA35VA	SUZ-KA50VA	SUZ-KA35VA	SUZ-KA50VA	SUZ-KA60VA	SUZ-KA71VA		
COOL	Capacity [kW]	2.5	3.5	4.6	3.5	5.0	5.5	7.1	
	Input [kW]	Min-Max	0.9 - 3.2	1.0 - 3.9	1.1 - 5.2	1.0 - 3.9	1.1 - 5.6	1.1 - 6.3	0.9 - 8.3
		Min-Max	0.69	1.06	1.63	1.09	1.78	1.89	2.53
	EER (COP)	Min-Max	0.25 - 1.00	0.27 - 1.33	0.49 - 2.13	0.26 - 1.35	0.51 - 2.33	0.50 - 2.52	0.84 - 3.55
		Star Rating	3.62	3.30	2.82	3.21	2.81	2.91	2.81
	Sound Level [dB(A)]	In (Lo-Hi*)	6.0	5.0	3.5	N/A	N/A	N/A	N/A
		Out	28 / 31 / 37	29 / 33 / 38	30 / 34 / 39	23 / 28 / 33	30 / 34 / 37	30 / 34 / 38	30 / 35 / 40
	Rated Current (In+Out) [A]	In	46	47	51 - 53	47	51 - 53	51 - 53	51 - 53
		Max	3.40	4.90	7.40	5.12	7.49	9.09	11.25
	Air Volume In (Lo-SH*) [L/s]	Max Current	8.16	9.18	16.0	9.9	16.89	16.9	17.23
Out		133 - 167	133 - 183	133 - 183	117 - 183	167 - 250	200 - 300	200 - 333	
HEAT	Capacity [kW]	3.0	4.0	5.0	4.0	6.0	7.0	8.1	
	Input [kW]	Min-Max	0.9 - 4.5	0.9 - 5.0	0.9 - 6.5	0.9 - 5.0	1.1 - 7.2	0.9 - 8.0	0.9 - 10.4
		Min-Max	0.83	1.10	1.55	1.10	1.87	2.05	2.37
	COP	Min-Max	0.17 - 1.36	0.25 - 1.46	0.39 - 3.36	0.24 - 1.52	0.47 - 3.45	0.32 - 2.69	0.74 - 3.85
		Star Rating	3.61	3.64	3.22	3.61	3.21	3.41	3.42
	Sound Level [dB(A)]	In (Lo-SH*)	5.0	5.0	4.0	N/A	N/A	N/A	N/A
		Out	28 / 31 / 37	29 / 33 / 38	30 / 34 / 39	23 / 28 / 33	30 / 34 / 37	30 / 34 / 38	30 / 35 / 40
	Rated Current (In+Out) [A]	In	46	48	53 - 55	48	53 - 55	53 - 55	53 - 55
		Max	4.0	5.1	7.0	5.21	6.98	10.38	10.74
	Air Volume In (Lo-SH*) [L/s]	Max Current	8.16	9.18	16.0	9.9	16.89	16.9	17.23
Out		133 - 167	133 - 183	133 - 183	117 - 183	167 - 250	200 - 300	200 - 333	
Controller	~VAL: Infra Red Remote, ~VA: PAR-21MAA Wired Controller				PAR-21MAA Wired Controller				
Power Supply (Powered from outdoor unit)	230V / Single Phase / 50 Hz				230V / Single Phase / 50 Hz				
INDOOR	Dimensions (WxDxH) [mm]	570 x 570 x 208 (Panel: 650 x 650 x 20)				990 x 700 x 200	990 x 700 x 200	1,190 x 700 x 200	1,190 x 700 x 200
	Weight [kg]	16.5 (Panel: 3)				21	23	27	27
	Static Pressure [pa]	N/A				5 - 15 - 35 - 50	5 - 15 - 35 - 50	5 - 15 - 35 - 50	5 - 15 - 35 - 50
OUTDOOR	Dimensions (WxDxH) [mm]	800 x 285 x 550	800 x 285 x 550	840 x 330 x 850	800 x 285 x 550	840 x 330 x 850	840 x 330 x 850	840 x 330 x 850	
	Weight [kg]	33	37	53	37	53	53	58	
	Sound Level [dB(A)]	46	47 - 48	51 - 55	47 - 48	51 - 55	51 - 55	51 - 55	
EXT. PIPE	Diameter (Liquid/Gas) [mm]	6.35 / 9.52	6.35 / 9.52	6.35 / 12.7	6.35 / 9.52	6.35 / 12.7	6.35 / 15.88	9.52 / 15.88	
	Max. Length/Height † [m]	20 / 12	20 / 12	30 / 30	20 / 12	30 / 30	30 / 30	30 / 30	
	Chargeless [m]	7	7	7	7	7	7	7	
OPERATION RANGE Outdoor	Cooling [°C]	-10 / +46	-10 / +46	-15 / +43	-10 / +46	-15 / +43	-15 / +43	-15 / +43	
	Heating [°C]	-15 / +24	-15 / +24	-15 / +24	-15 / +24	-15 / +24	-15 / +24	-15 / +24	

Optional: PAC-KE07DM-E - Drain Lift Pump

Note:

- Rating Conditions (AS / NZS 3823)
Cooling — Indoor: 27°C DB, 19°C WB Outdoor: 35°C DB
Heating — Indoor: 20°C DB Outdoor: 7°C DB, 6°C WB
Refrigerant piping length (one way): 5 m
- Guaranteed operating range: see specifications table
- Dry function will not work when the room temperature is below 13°C

*Sound Level: Low / Medium / High.

Colour: Heat pump units shown may not be colour accurate, please ensure you view an actual unit for colour matching.

† Maximum length is inclusive of height differential. i.e. (20/12) means the pipe can be 12m high and 8m across for a total length of 20m.

5 Year Warranty

Mitsubishi Electric Air Conditioners / Heat Pumps come with a full 5 year parts, labour and compressor warranty.



AUCKLAND

Unit 1, 4 Walls Road
PO Box 12-726, Penrose
Phone (09) 526 9347, Fax (09) 526 9369

WELLINGTON (HEAD OFFICE)

1 Parliament Street
PO Box 30-772, Lower Hutt
Phone (04) 560 9147, Fax (04) 560 9133

CHRISTCHURCH

Suite 2, Level 1, 37 Mandeville Street
PO Box 1604, Christchurch
Phone (03) 341 2837, Fax (03) 341 2838

www.bdt.co.nz / 0800 QUIET AIRCON

New publication effective May 2008. All features and specifications are subject to change and amendment at anytime. Where specifications are critical to design or pre-build we advise that you seek confirmation of accuracy from our product management team on (04) 560 9100.